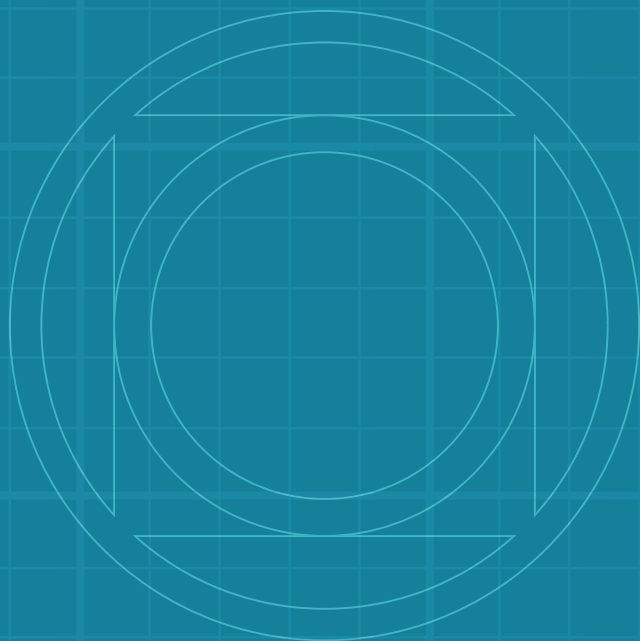




INTERACTIVE EDITION

# One-Piece Catalog 2024/2025



# OPI - One-Piece Implant

OPI implant is specifically designed for narrow ridges and tight spaces. The insertion of this implant is quick and simple one-stage procedure. This implant insertion saves time, reduces trauma for the patient, and produces an outstanding aesthetic at the final restoration. this versatile implant is mostly used for Multi Unit restorations with immediate loading in the maxilla & mandible with adequate bone tissue.

**MATERIAL:** Ti-6Al-4V ELI (Titanium Grade 5).

**SURFACE TREATMENT:** SLA - Sandblast, Large Grit, Acid-etch.

**STERILIZATION:** Gamma irradiation.

## SPECIFICATIONS:



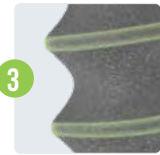
### INTEGRATED ABUTMENT

- Increases the strength and stability of the by eliminating the weak connection point of the two-piece implant.



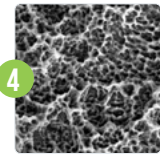
### NECK

- Smooth-surface neck.



### IMPLANT THREADS

- Single thread design.
- Bone condensing threads.
- Self-tapping.



### SLA - SANDBLAST, LARGE GRIT, ACID-ETCH

- Enhances dental implant stability and osseointegration, improving long-term success rates.



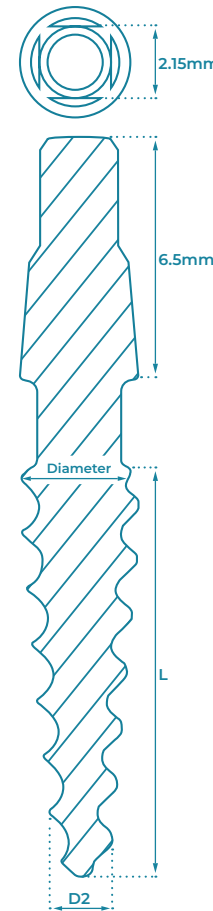
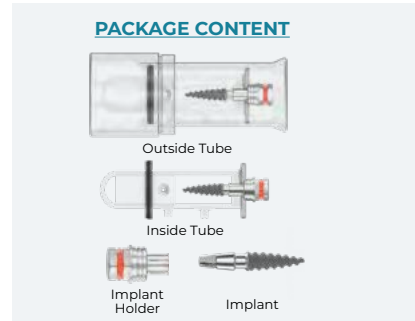
### TAPERED THREAD AND TAPERED CORE BODY

- Excellent primary stability.
- Improves bone condensation during insertion.
- increased bone-to-implant contact along the implant body



### NARROW ROUNDED APEX

- Easy insertion in areas with limited space such as laterals and central incisors.



DIAMETER	L (mm)	CODE	D2
Ø2.4	10	P2410	Ø1.7
	11.5	P2411	
	13	P2413	
Ø2.8	10	P2810	Ø1.8
	11.5	P2811	
	13	P2813	
Ø3.0	16	P2816	Ø1.8
	10	P3010	
	11.5	P3011	
Ø3.3	13	P3013	Ø1.8
	16	P3016	
	10	P3310	Ø1.8
Ø3.75	11.5	P3311	
	13	P3313	
	16	P3316	Ø1.9
Ø4.2	6	P3706	
	8	P3708	
	10	P3710	Ø1.9
Ø5.0	11.5	P3711	
	13	P3713	
Ø5.0	16	P3716	Ø1.9
	6	P4206	
	8	P4208	
Ø5.0	10	P4210	Ø1.9
	11.5	P4211	
	13	P4213	Ø1.9
Ø5.0	16	P4216	
	18	P4218	
Ø5.0	10	P5010	Ø1.9
	11.5	P5011	
	13	P5013	
Ø5.0	16	P5016	

Drilling Protocol		Marking Drill	Lance Drill Ø1.5	Lance Drill Ø2.0	Lance Drill Ø2.5	Lance Drill Ø2.8	Lance Drill Ø3.2	Straight Drill Ø3.65
Ø2.4	Soft Bone	●	●	○	○	○	○	○
Ø2.4	Hard Bone	●	●	○	○	○	○	○
Ø2.8	Soft Bone	●	●	○	○	○	○	○
Ø2.8	Hard Bone	●	●	○	○	○	○	○
Ø3.0	Soft Bone	●	●	○	○	○	○	○
Ø3.0	Hard Bone	●	●	○	○	○	○	○
Ø3.3	Soft Bone	●	●	○	○	○	○	○
Ø3.3	Hard Bone	●	●	○	○	○	○	○
Ø3.75	Soft Bone	●	●	○	○	○	○	○
Ø3.75	Hard Bone	●	●	○	○	○	○	○
Ø4.2	Soft Bone	●	●	○	○	○	○	○
Ø4.2	Hard Bone	●	●	○	○	○	○	○
Ø5.0	Soft Bone	●	●	○	○	○	○	○
Ø5.0	Hard Bone	●	●	○	○	○	○	○

The suggested drilling protocol is only a recommendation and should not replace the doctor's opinion.

# OPIB - Flexible One-Piece Implant

OPIB implant is specifically designed for narrow ridges and tight spaces. An optional bendable neck allows adjusting the abutment slope angle up to 20°, a very useful feature in limited space unparallel cases. The insertion of OPIB Implant is a quick and simple one-stage procedure. This implants save time, reduces trauma for the patient, and produces an outstanding aesthetic at the final restoration. This versatile implant mostly used for Multi Unit restorations with immediate loading in the maxilla & mandible with adequate bone tissue.

**MATERIAL:** Ti-6Al-4V ELI (Titanium Grade 5).

**SURFACE TREATMENT:** RBM - Resorbable Blast Media.

**STERILIZATION:** Gamma irradiation.

## SPECIFICATIONS:



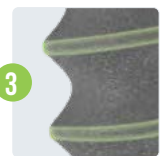
### INTEGRATED ABUTMENT

- Increases the strength and stability of the by eliminating the weak connection point of the two-piece implant.



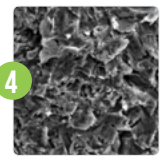
### NECK

- Smooth-surface neck.
- Flexible up to 20°



### IMPLANT THREADS

- Single thread design.
- Bone condensing threads.
- Self-tapping.



### RBM - RESORBABLE BLAST MEDIA

- Promotes faster and stronger bone integration, enhancing the stability of dental implants.



### TAPERED THREAD AND TAPERED CORE BODY

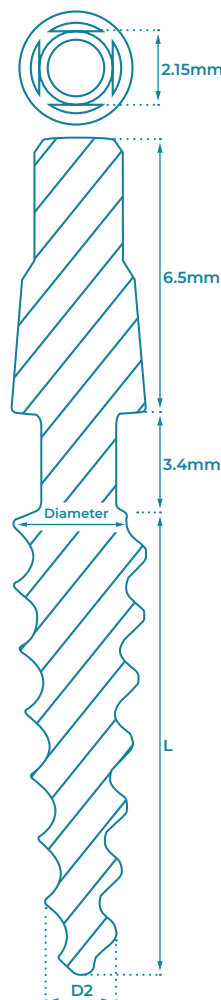
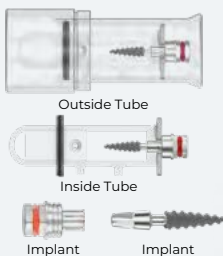
- Excellent primary stability.
- Improves bone condensation during insertion.
- increased bone-to-implant contact along the implant body



### NARROW ROUNDED APEX

- Easy insertion in areas with limited space such as laterals and central incisors.

## PACKAGE CONTENT



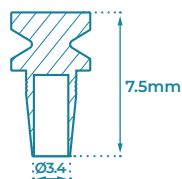
DIAMETER	L (mm)	CODE	D2
Ø3.3	10	B3310	Ø1.8
	11.5	B3311	
	13	B3313	
	16	B3316	
Ø3.75	6	B3706	Ø1.9
	8	B3708	
	10	B3710	
	11.5	B3711	
	13	B3713	
	16	B3716	
Ø4.2	6	B4206	Ø1.9
	8	B4208	
	10	B4210	
	11.5	B4211	
	13	B4213	
	16	B4216	
Ø5.0	8	B5008	Ø1.9
	10	B5010	
	11.5	B5011	
	13	B5013	
	16	B5016	

## Drilling Protocol

	Marking Drill	Lance Drill Ø1.5	Lance Drill Ø2.0	Lance Drill Ø2.5	Lance Drill Ø2.8	Lance Drill Ø3.2	Straight Drill Ø3.65
Ø3.3	●	●	●	●	●	●	●
Ø3.75	●	●	●	●	●	●	●
Ø4.2	●	●	●	●	●	●	●
Ø5.0	●	●	●	●	●	●	●

The suggested drilling protocol is only a recommendation and should not replace the doctor's opinion.

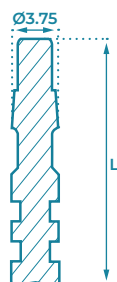
## ONE-PIECE IMPLANTS COMPONENTS



### IMPRESSION COPING TRANSFER



CODE	OPC
------	-----

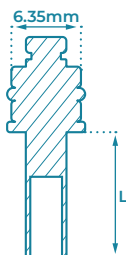


### IMPLANT ANALOGS

TYPE	For OPI	For Flexible - OPIB
L	19mm	18mm



CODE	AOP	ABOP
------	-----	------



### HEX DRIVERS

	L (mm)	CODE
	15	HDOP
	18	HDO
	50	HDOL
FOR FLEXIBLE NECK		
	18	RDOP

### MANUAL WRENCH DRIVER ADAPTERS



HEX (mm)	CODE
175	HDLOF

### MANUAL WRENCH DRIVER ADAPTERS



HEX (mm)	CODE
6.35	HRAL

## ONE-PIECE IMPLANTS SURGICAL KIT



Complete set of instruments for a range of one piece implant placement treatments. Inside the One Piece Surgical Kit you'll find all the instruments required for a bone preparation for implant placement procedures. The Kit is comfortable to use, intuitively organized, and clearly labeled, making it easy to put them back in the tray after use.

### FEATURES:

- Suitable for autoclaving, ensuring proper sterilization - at a temperature of 134°C.
- All instruments are clearly labeled, making them easy to identify and use.
- The tools are made from durable Stainless Steel, ensuring high-quality performance.

### KIT CONTENT

KIT CONTENT			CODE: BSP	
ITEM	NAME	L (mm)	TYPE	CODE
	Short Drill	13	Ø2.0	LPD20S
			Ø2.5	LPD25S
			Ø2.8	LPD28S
			Ø3.2	LPD32S
	Long Drill	16	Ø2.0	LPD20
			Ø2.5	LPD25
			Ø2.8	LPD28
			Ø3.2	LPD32
	Hex Driver	10	Flexible Neck	RDOP
		18	For Both	HDO
	Motor Mount To Ratchet Adapter	30	6.35	STRA
	Ratchet Wrench	----	6.35	RA

• Product image size and proportions are for illustration purposes only. Please refer to the table for actual sizes and proportions.

# ALL SOLUTION FOR A PERFECT **S**MILE



[www.gdentalt.com](http://www.gdentalt.com)

## Global Dental Transfers Ltd.

M Tower Building  
Recha Freier 9  
Beer Sheva  
8489440  
Israel

Tel: +1 929 442 0773  
Email: [Info@gdentalt.com](mailto:Info@gdentalt.com)